

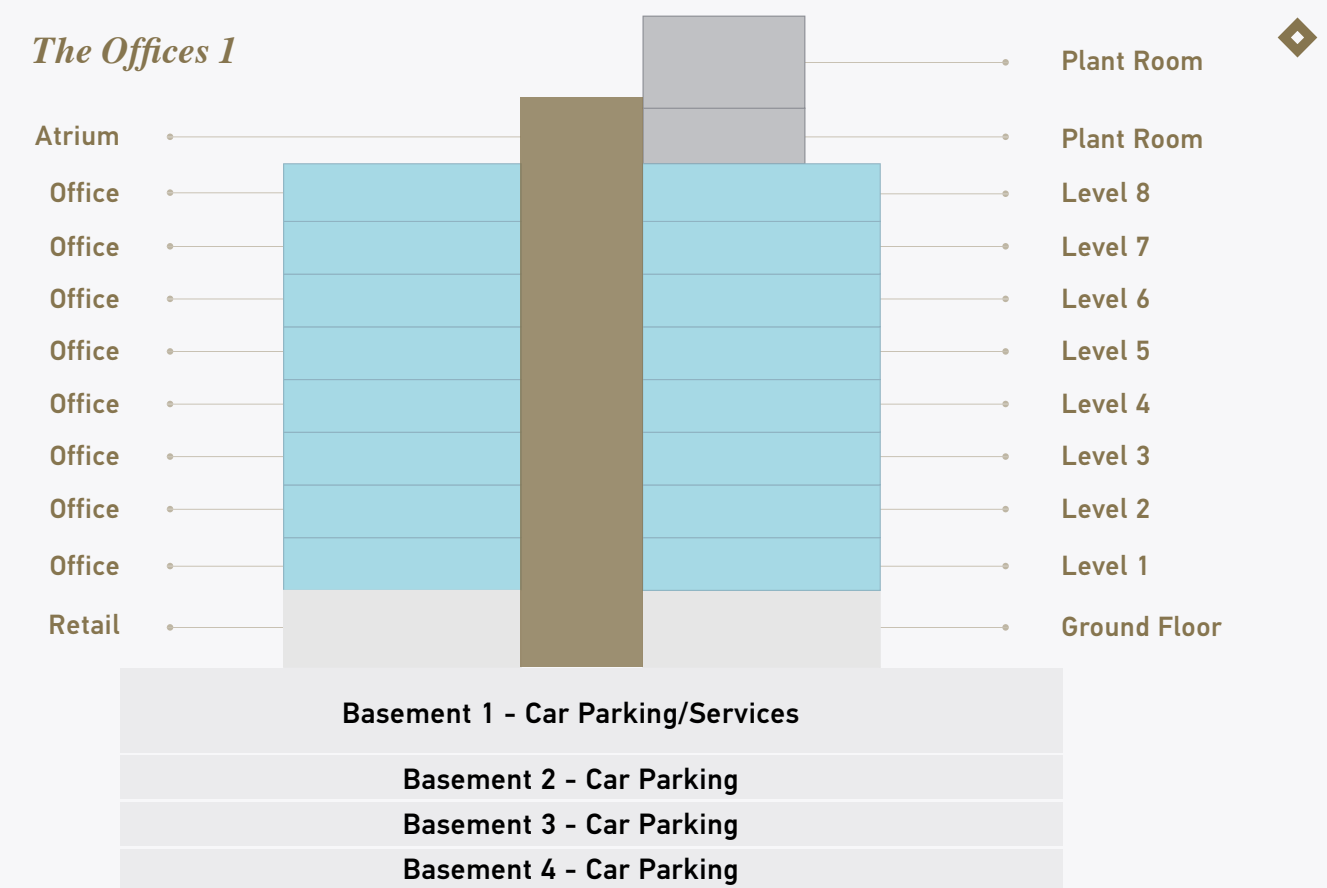
Layout and design

Flexible floor plate options will provide tenants with a variety of layouts to enhance their work space and occupational efficiency. The Offices 1 was the first to be completed. This building has offices ranging in size from approximately 3,100 to 20,700 sq ft (290 to 1,920 sq m) per floor, with a total building size of approximately 153,000 sq ft (14,000 sq m). By occupying large, flexible floor plates that benefit from an efficient planning grid of 1.5 m x 1.5 m (4.9 ft x 4.9 ft), companies can achieve a high occupational density of 1 person per 9 sq m (97 sq ft) to consolidate their business operations.

AN ADAPTABLE OFFICE SPACE

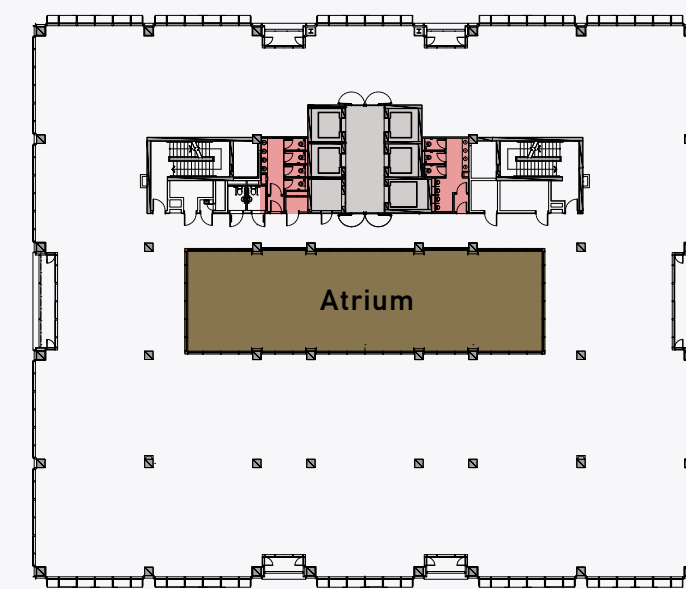
Layout and design

The Offices 1



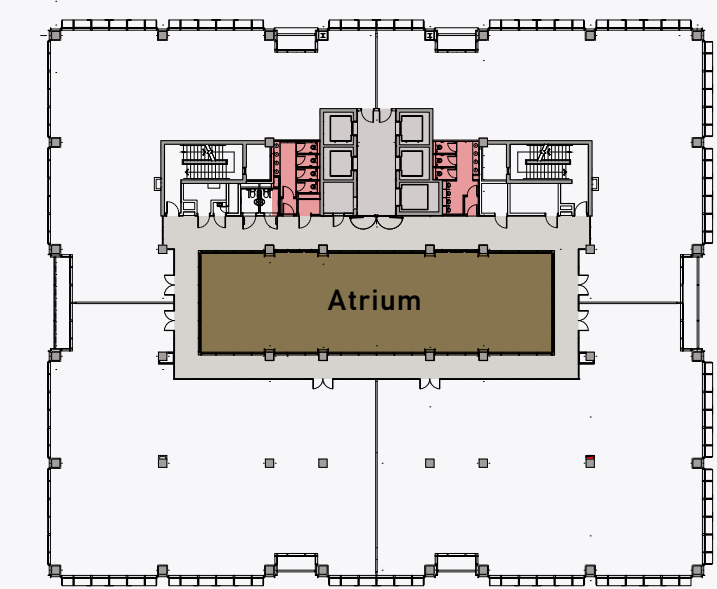
Ground Floor Retail/F&B	13,950 sq ft (1,296 sq m - NIA/NLA*)
Levels 1-8 Office Space	152,817 sq ft (14,197 sq m - NIA/NLA*)
Retail Height	6 m slab-to-slab
Office Height	4 m slab-to-slab (2.8 m clear)

Single Tenancy



- Atrium void
- WC area
- Lifts/lift lobby

Multiple Tenancy



- Atrium void
- Common corridor
- WC area
- Lifts/lift lobby

* NIA - Net Internal Area
 NLA - Net Leasable Area
 All floor areas are subject to measurement